

N58

USB Driver Installation Guide

Issue 2.0 Date 2020-05-19



Copyright © Neoway Technology Co., Ltd 2020. All rights reserved.

No part of this document may be reproduced or transmitted in any form or by any means without prior written consent of Neoway Technology Co., Ltd.

neoway is the trademark of Neoway Technology Co., Ltd.

All other trademarks and trade names mentioned in this document are the property of their respective holders.

Notice

This document provides a guide for users to use N58.

This document is intended for system engineers (SEs), development engineers, and test engineers.

THIS GUIDE PROVIDES INSTRUCTIONS FOR CUSTOMERS TO DESIGN THEIR APPLICATIONS. PLEASE FOLLOW THE RULES AND PARAMETERS IN THIS GUIDE TO DESIGN AND COMMISSION. NEOWAY WILL NOT TAKE ANY RESPONSIBILITY OF BODILY HURT OR ASSET LOSS CAUSED BY IMPROPER OPERATIONS.

THE INFORMATION IN THIS DOCUMENT IS SUBJECT TO CHANGE WITHOUT NOTICE DUE TO PRODUCT VERSION UPDATE OR OTHER REASONS.

EVERY EFFORT HAS BEEN MADE IN PREPARATION OF THIS DOCUMENT TO ENSURE ACCURACY OF THE CONTENTS, BUT ALL STATEMENTS, INFORMATION, AND RECOMMENDATIONS IN THIS DOCUMENT DO NOT CONSTITUTE A WARRANTY OF ANY KIND, EXPRESS OR IMPLIED.

Neoway provides customers complete technical support. If you have any question, please contact your account manager or email to the following email addresses:

Sales@neoway.com

Support@neoway.com

Website: <http://www.neoway.com>

Contents

1 Overview.....	1
2 Disabling Driver Signature Enforcement	2
2.1 On Windows 7/8.....	2
2.2 On Windows 10.....	5
3 Installing USB Driver	9

Neoway Confidential

About This Document

Scope

This document is applicable to the **N58** series and describes the installation process of N58 drivers.




Audience

This document is intended for [system engineers \(SEs\)](#), [development engineers](#), and [test engineers](#).

Change History

Issue	Date	Change	Changed By
2.0	2020-02	Initial draft	Wu GuoQing

Conventions

Symbol	Indication
	This warning symbol means danger. You are in a situation that could cause fatal device damage or even bodily damage.
	This caution symbol means the reader be careful. In this situation, you might perform an action that could result in module or product damages.
	Means note or tips for readers to use the module

Related Documents

Neoway_N58_Datasheet

Neoway_N58_Product_Specifications

Neoway_N58_AT_Command_Mannual

Neoway_N58_EVK_User_Guide

Neoway Confidential

1 Overview

N58 is an industrial-grade LTE Cat1 module that is developed on the UNISOC platform. It allows customers to debug and upgrade firmware and to capture logs through USB on Windows OS.

This document describes the process of installing N5 USB driver.

Preparation:

- N58 module (firmware version is later than N58-R02-STD_BZ-02D)
- USB cable
- USB driver program
- Computer running Window7/Windows8/Windows10 OS

2 Disabling Driver Signature Enforcement

Before installing N58 drivers on Windows OS, you need to disable driver signature enforcement so that the driver can be installed successfully.

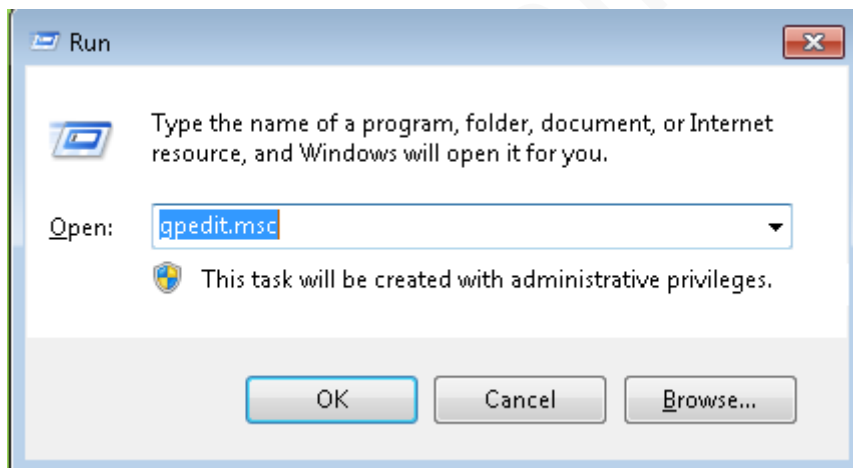
This chapter describes how to disable driver signature enforcement on different Windows OS.

2.1 On Windows 7/8

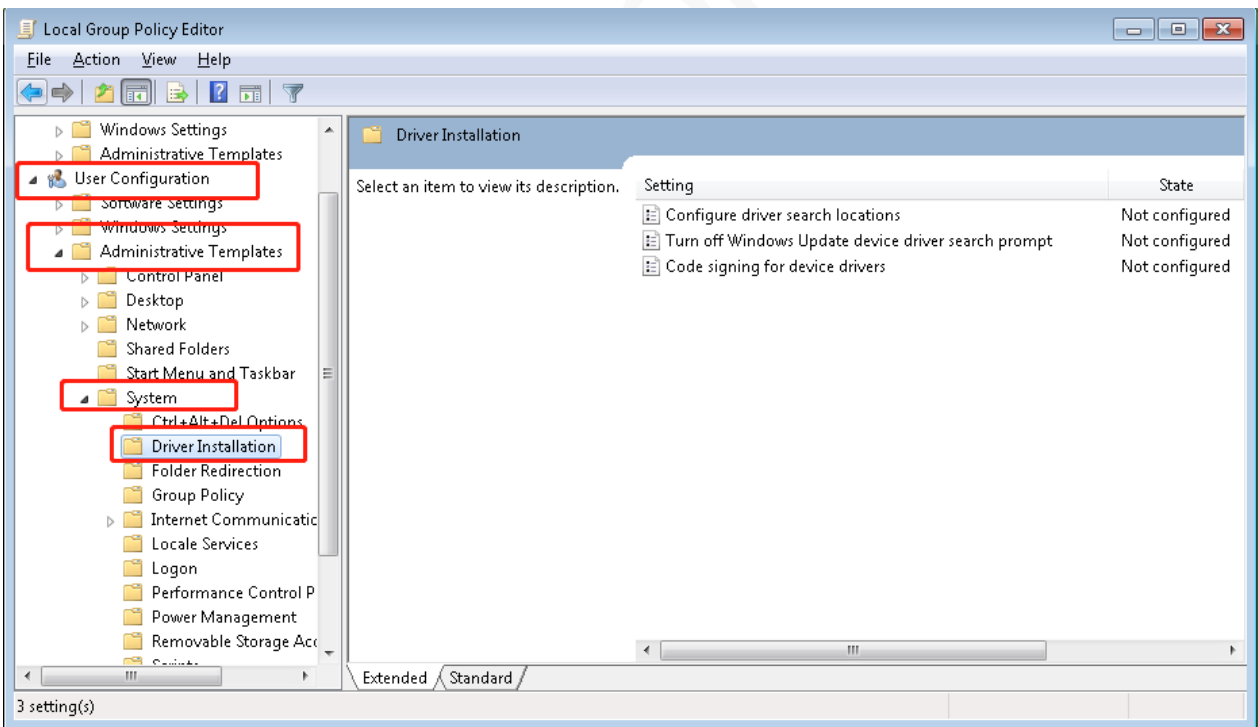
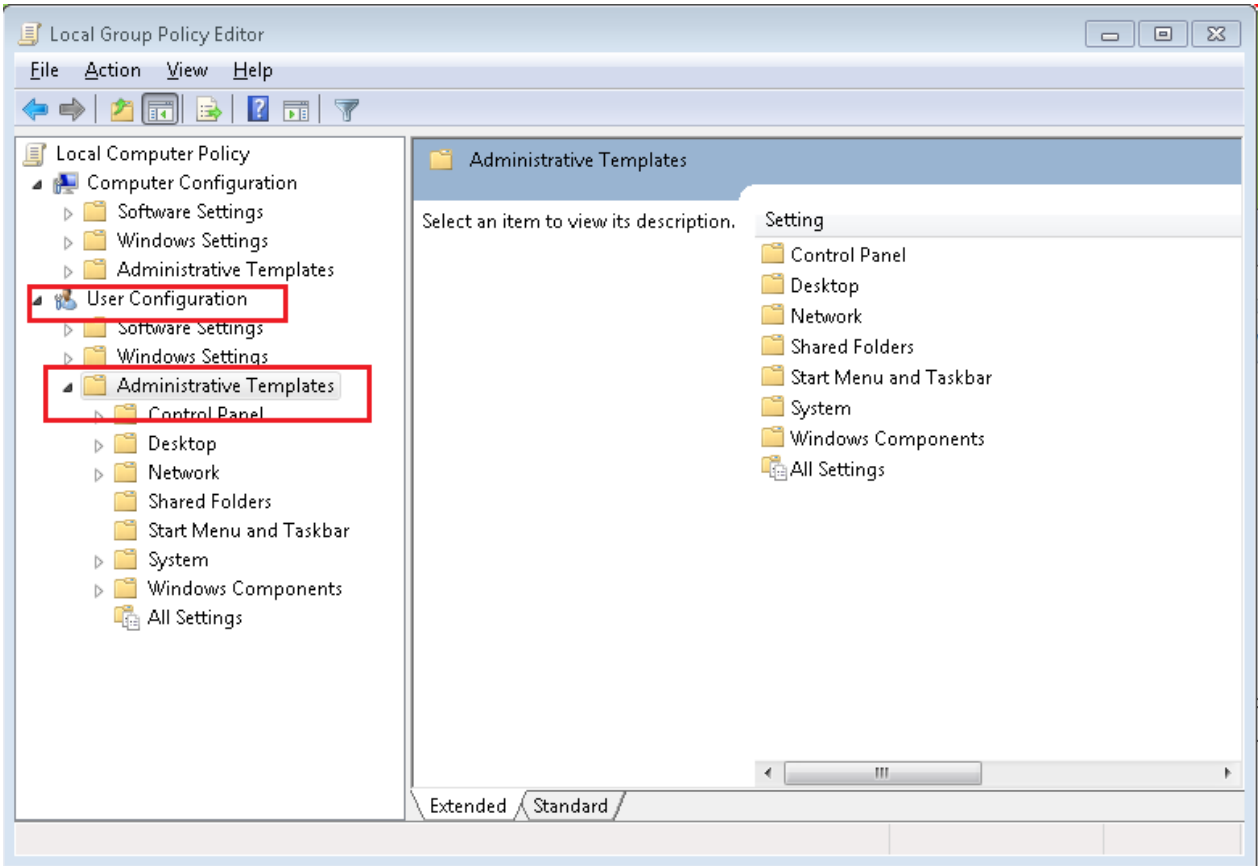
On a computer running Windows 7/8, perform the following steps to disable driver signature enforcement:

Step 1: Press **Window + R**, input **gpedit.msc** in the **Run** dialog box and press **Enter**.

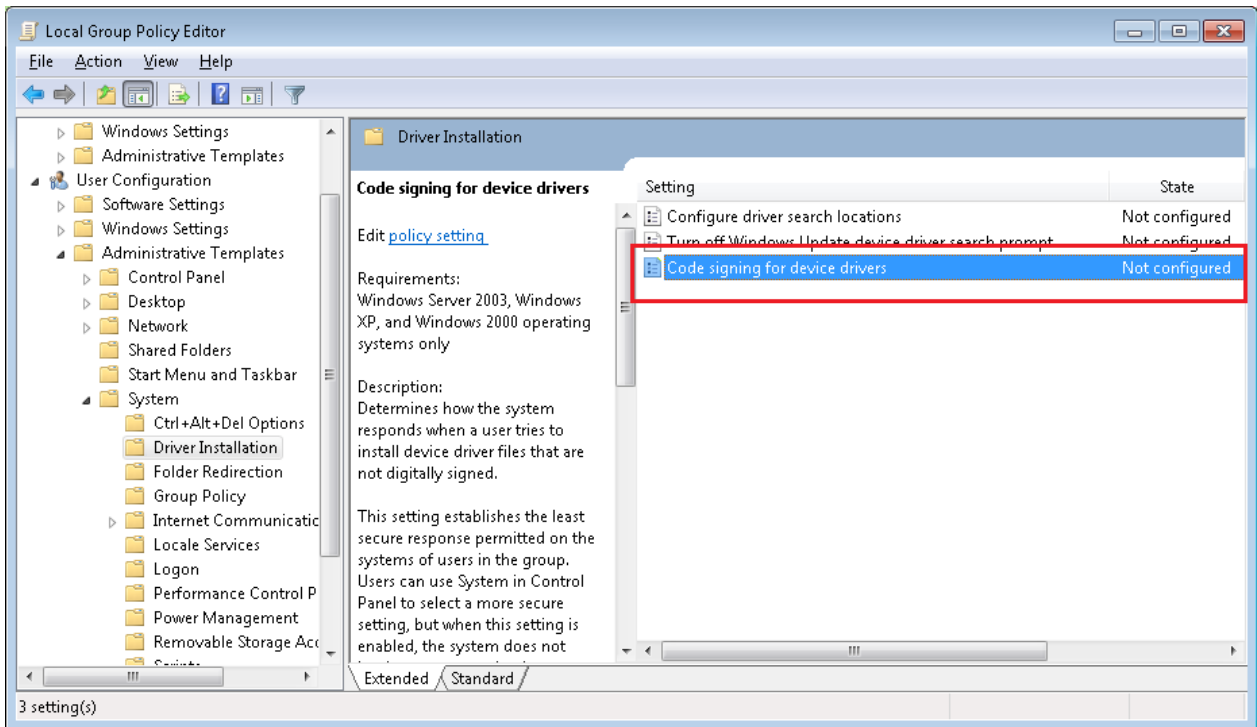
Local Group Policy Editor is opened.



Step 2: In Local Group Policy Editor, choose **User Configuration > Administrative Template > System > Driver Installation** from the navigation tree in the left panel.

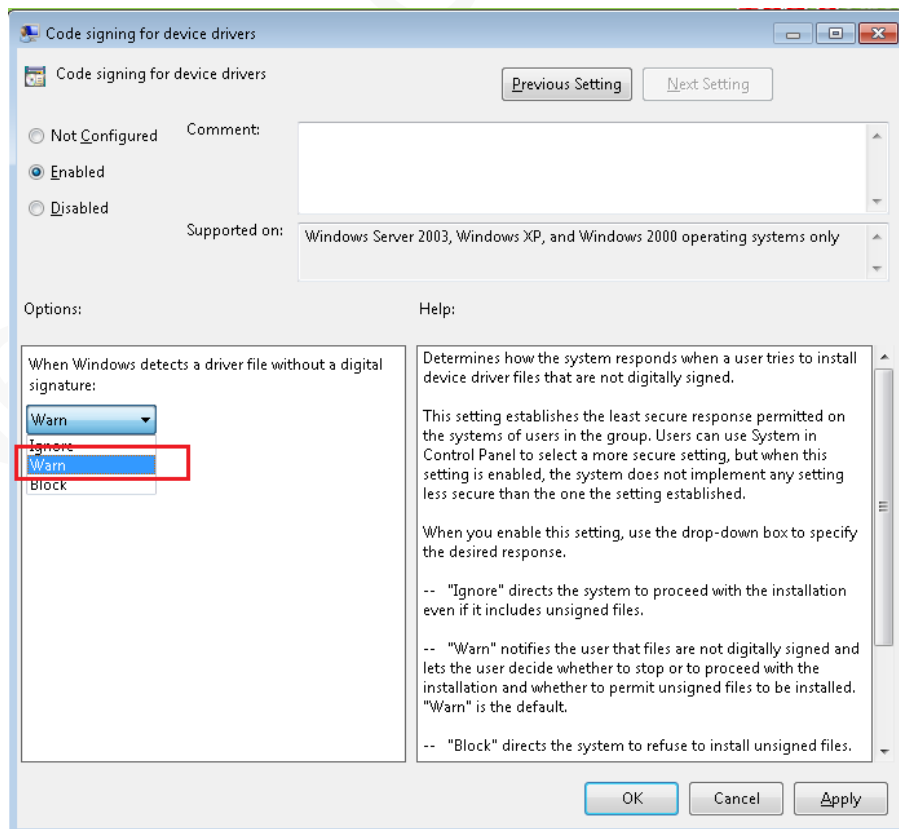


Step 3: In the **Setting** panel, double-click **Code signing for device driver**.



Step 4: In the dialog box that is displayed, choose **Warn** from the **When Windows detects a driver file without a digital signature:** dropdown list and click **OK**.

When an unknown driver program is installed, Windows displays an alarm dialog box and users can decide if the driver should be installed or not.

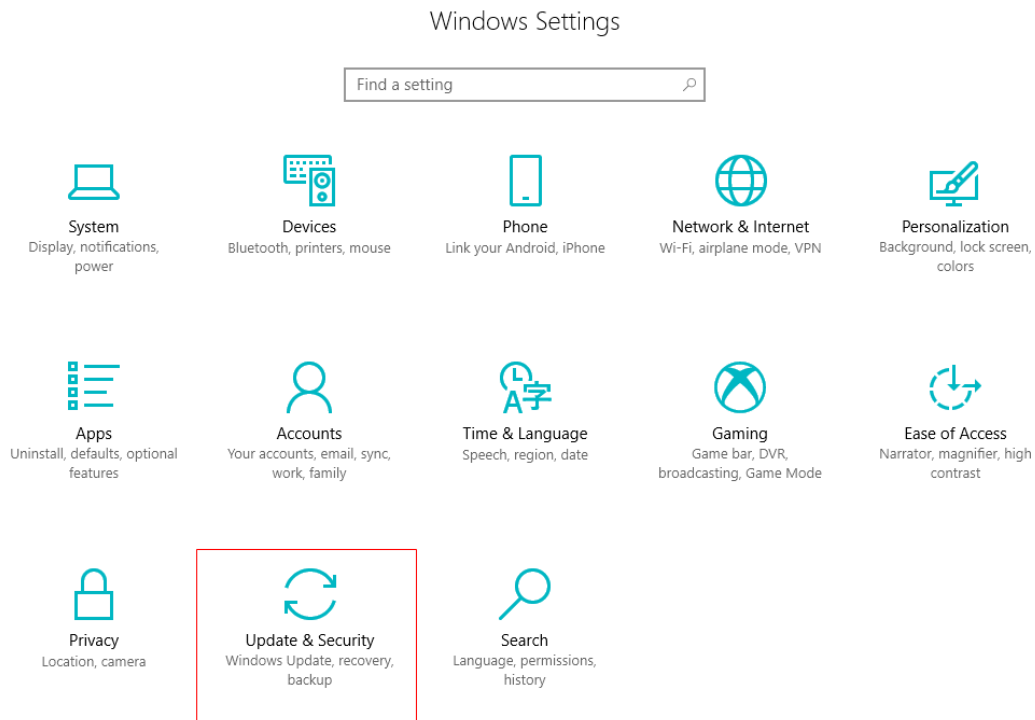


2.2 On Windows 10

On a computer running Windows 10, perform the following steps to disable driver signature enforcement:

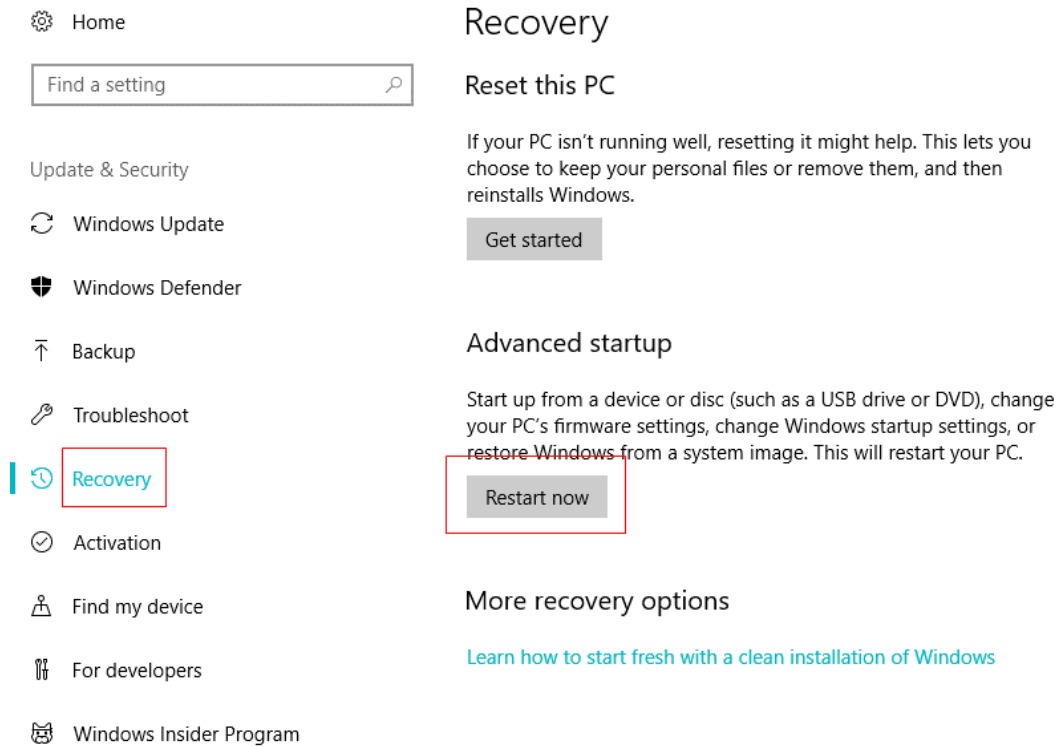
Step 1: Press **Windows+I to start **Windows Settings**.**

Click **Update & Security.**

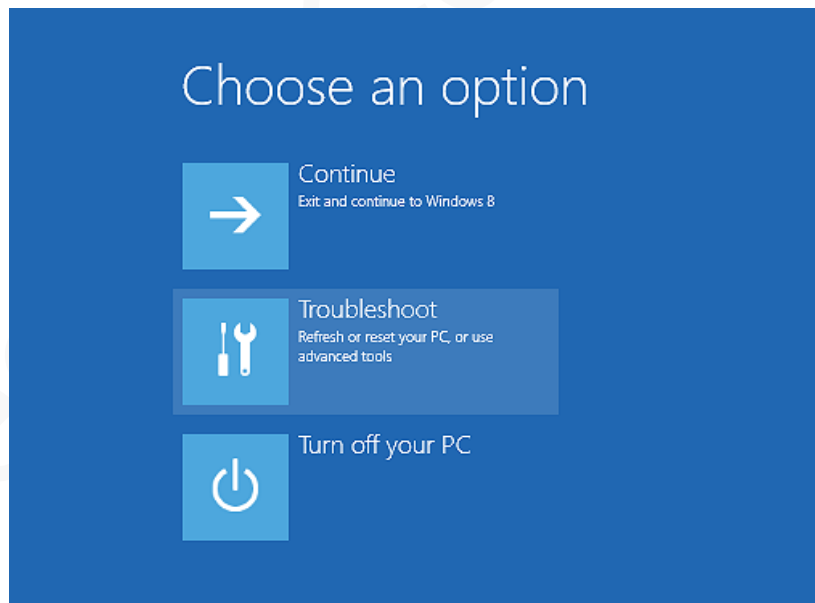


Step 2: Click **Recovery in the left panel and then click **Restart now** in **Advanced startup**.**

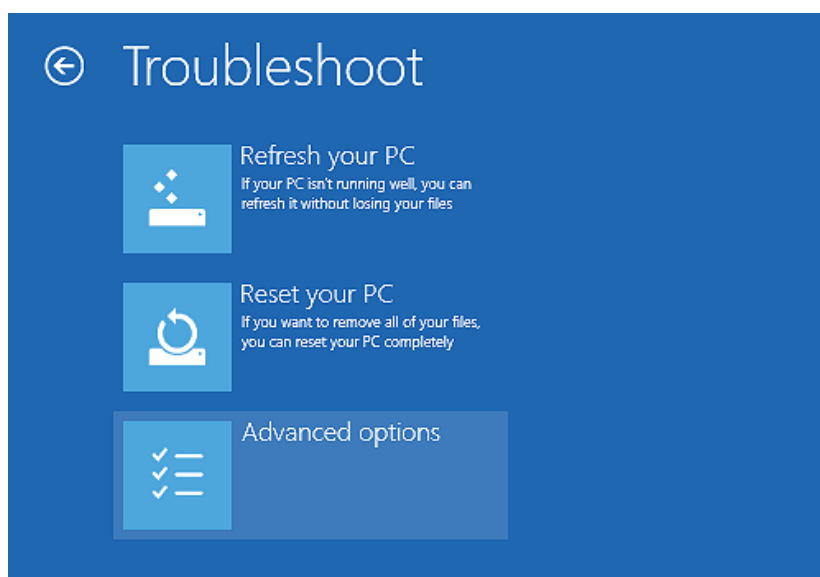
Alternatively, click **Start** menu, hold **Shift** and click **Power > Restart**.



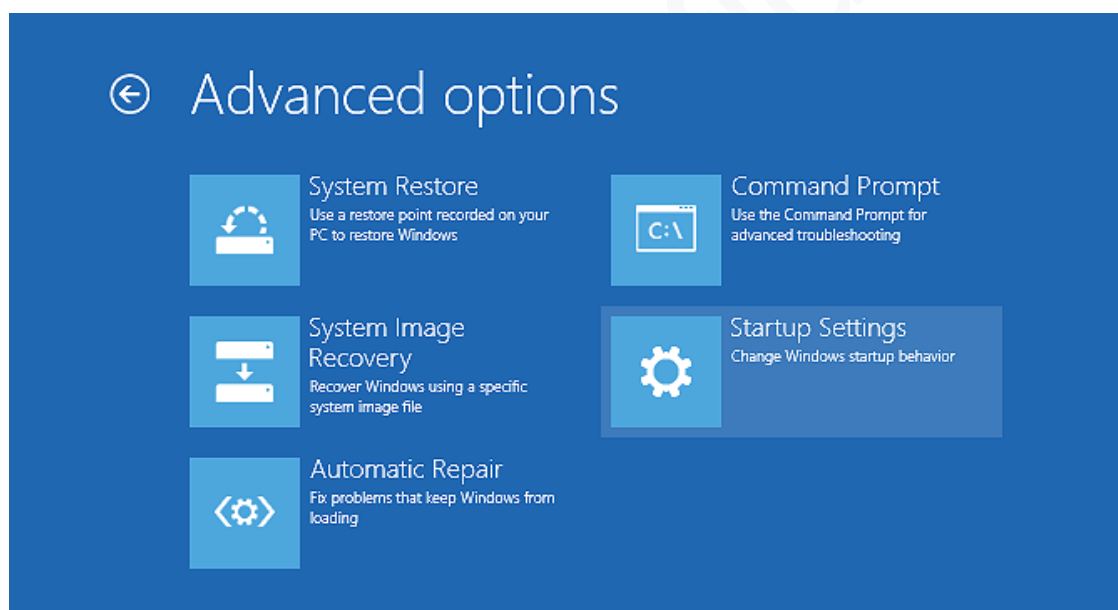
Step 3: In the **Choose an option** screen, click **Troubleshoot**.



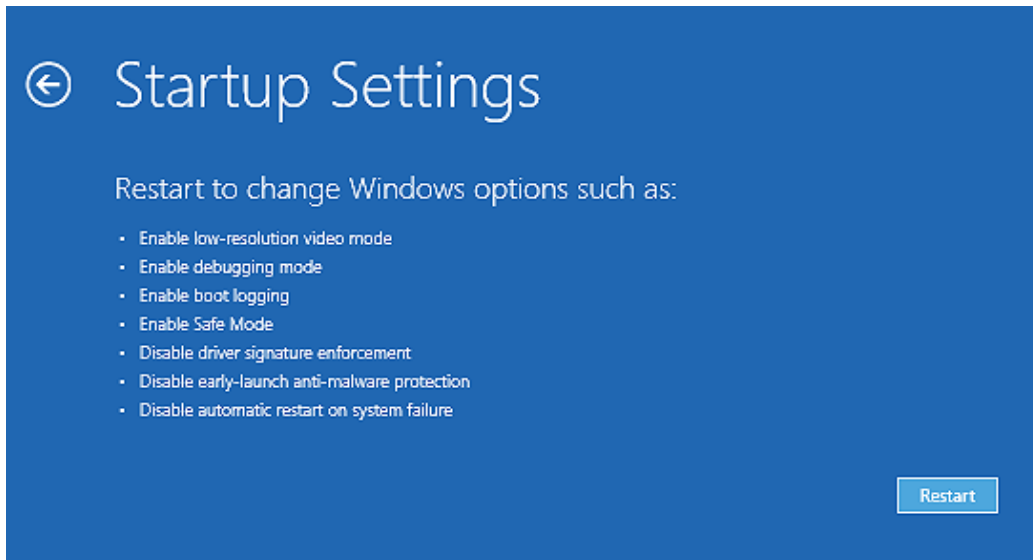
Step 4: Click **Advanced options**.



Step 5: Click Startup Settings.

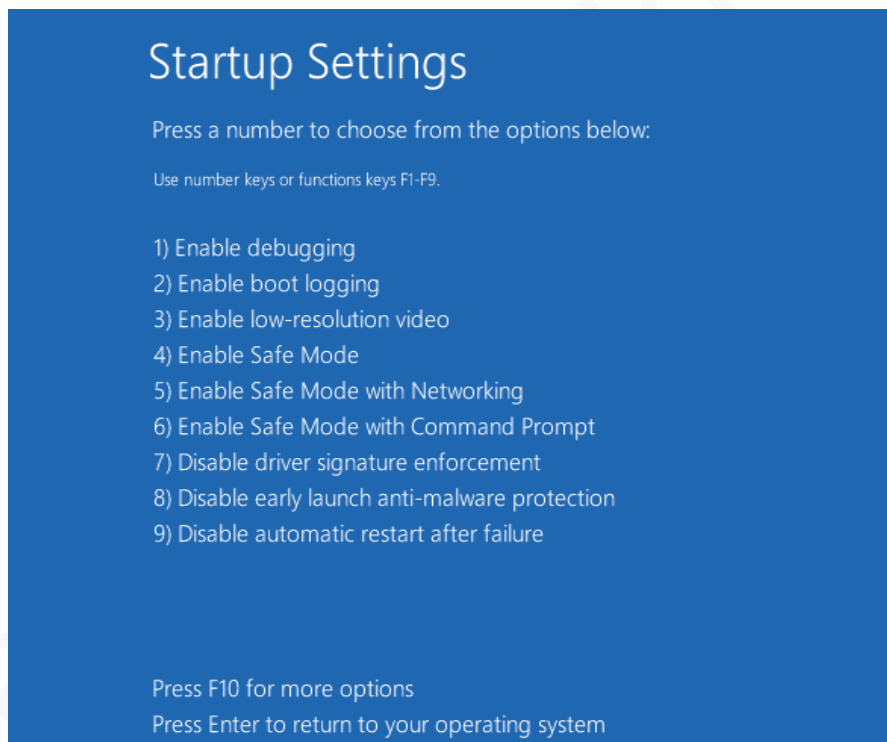


Step 6: Click Restart.



Step 7: Press F7 or the number key 7.

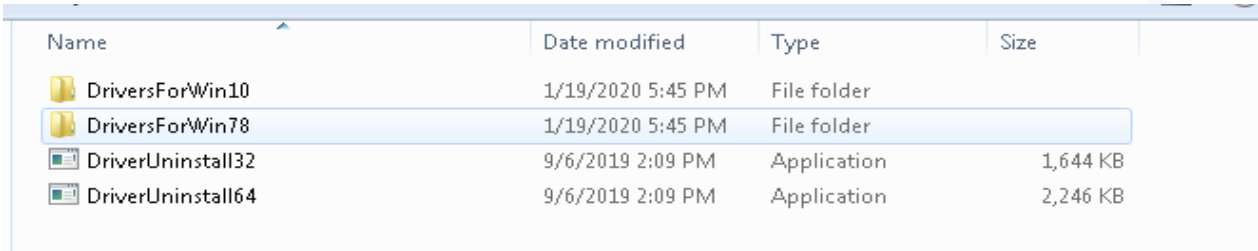
The Windows OS is restarted and the driver signature enforcement is disabled successfully.



3 Installing USB Driver

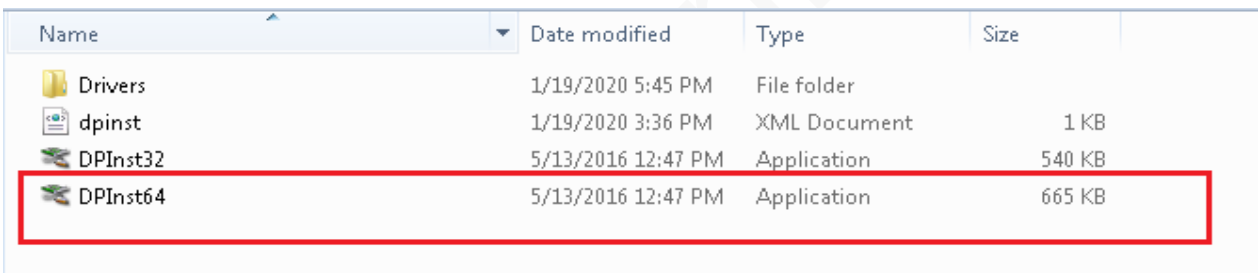
This chapter uses Windows 7 as an example to describe how to install N58 USB drivers.

Step 1: Decompress the driver package and open the **DriversForWin78** folder.

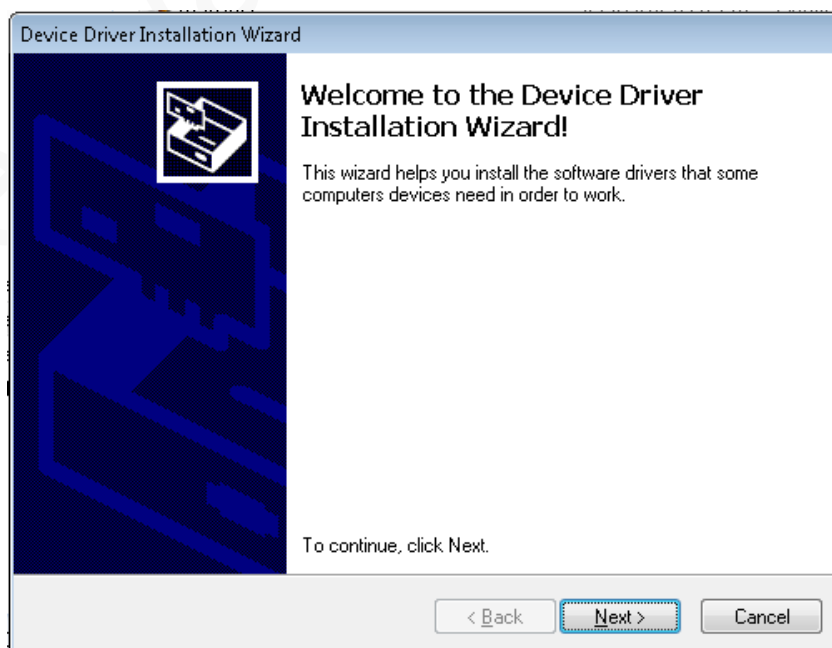


Step 2: Double-click **DPInst64.exe**.

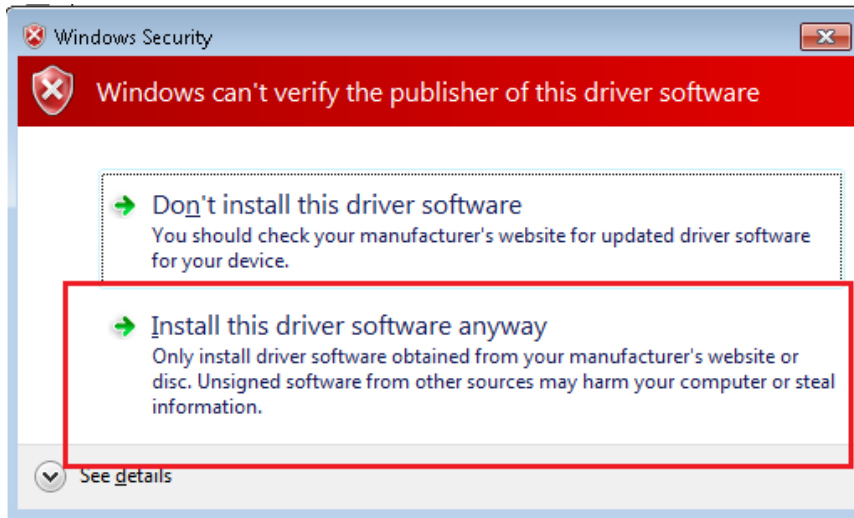
Select the program corresponding to your OS.
Select DPInst64 for 64-bit OS and DPInst32 for 32-bit OS.



Step 3: In the installation wizard, click **Next**.



Step 4: In Windows displays the **Windows Security** dialog box, click **Install this software anyway**.



The driver is installed successfully.

