

Description:

ADIY 4G LTE modem with SIM card socket, SMA antenna connector, DC power jack, and an RS232 interface supports wireless communication modes of LTE-TDD/LTE-FDD/GSM/GPRS/EDGE. This board is built around the SIMCOM A7670C LTE module and comes with an RS232 interface. The RS232 interface enables easy connection with the computer or laptop using a USB to Serial connector or to the microcontroller using an RS232 to TTL converter. A 3-pin header also exposes a 1.8V level UART interface for direct interfacing with microcontrollers. Communication with A7670C is done using AT commands.

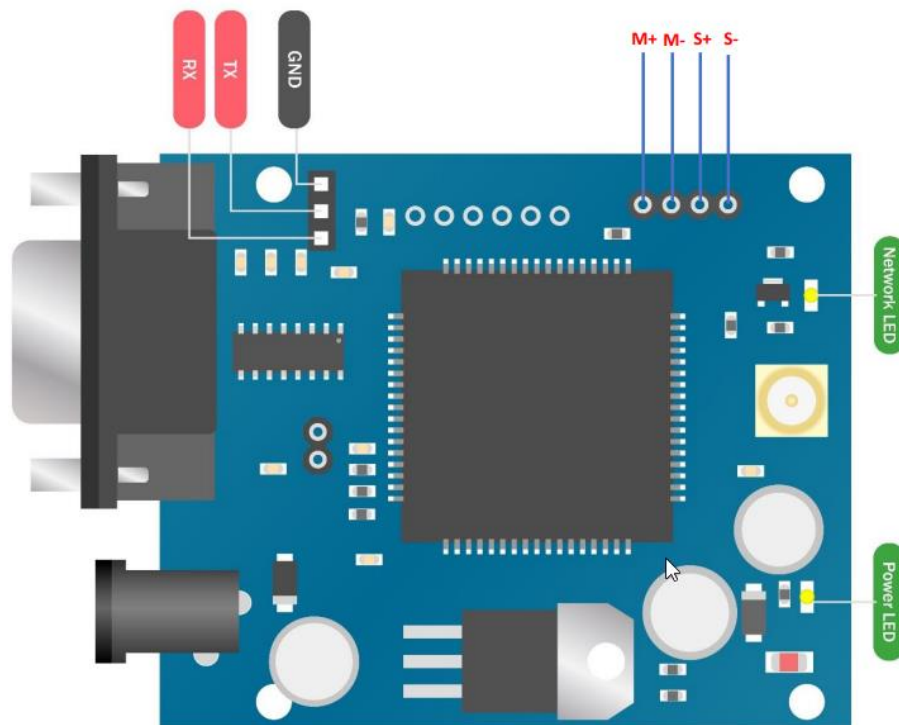
Features:

1. Suitable for LTE and GSM networks.
2. In-built SIM Card Holder
3. Power LED and Network Status LED.
4. SMA connector for external antenna

Specifications:

- DC Jack input voltage: 9-12V
- Supports LTE-FDD, LTE-TDD, and GSM, frequency bands
- Control via AT commands
- Powerful TCP/IP protocol stack for internet data transfer
- Supports maximum 10Mbps downlink rate and 5Mbps uplink rate
- Abundant software functions: FOTA, LBS, SSL
- RS232 DB9 Connector interface
- 1.8V UART header.
- Recommended Sim card: JIO 4G Sim

Pin Configuration:



TX/RX Pins can be used to transfer the TTL serial data. These are used for communication with interfaced microcontroller for sending or receiving data.

Power LED indicates when the system is powered ON.

Network LED indicates status of network. When the modem is searching for network, LED blinks at faster rate. Once the network is found, LED starts blinking at slower rate.

M+ and M- are used for connection of microphone.

S+ and S- are used for connection of speaker.

Application:

- Communication between mobile and system
- Control motor pump using mobile

